

RAA271050

4A, High Efficiency Synchronous Buck Regulator for Automotive Applications

The RAA271050 is an automotive grade (AEC Q-100 Grade 1) 4A synchronous step down voltage regulator with integrated high-side and low-side MOSFETs. The output voltage of this buck regulator is fixed to either 5.0V/3.3V. With an input voltage range of 4.5V to 42V it provides a high-efficiency solution for a variety of point of load applications.

The RAA271050 works as a primary regulator and companion product with the RAA271000 system PMIC, whose target application is the R-CAR V3H processor, where a high performance complete power solution is required.

The RAA271050 uses peak current mode control and this coupled with the high 2.2MHz fixed frequency provide component selection flexibility to minimize the total solution size. For applications where solution size is flexible, a 440kHz fixed frequency option is available which provides higher efficiency.

The RAA271050 protection features include over-current, UVLO, output over-voltage, under-voltage, and thermal overload protection.

The RAA271050 implements safety monitoring features that ensure that the output voltage and temperature are all within their expected ranges of operation. This IC also implements dual bandgaps/reference voltages to ensure that the monitoring systems have a reference, which is separate to the reference that the regulator is using.

Features

- AEC-Q100 qualified, Grade 1: -40°C to +125°C
- Supports ASIL C Systems
- V_{IN} operating range from 4.0V to 42V
- $V_{OUT} = 5.0V$ or $3.3V$ (factory programmable)
- High efficiency synchronous buck regulator with efficiency up to:
 - 95%; $V_{IN} = 12V$; $V_{OUT} = 5V$; $F = 440kHz$
 - 92%; $V_{IN} = 12V$; $V_{OUT} = 5V$; $F = 2.2MHz$
- 2% V_{OUT} accuracy over temperature, load, line
- Factory programmable soft-start
- Soft-stop output discharge during disable
- RSTb output which doubles as Monitor fault or Buck Fault Indicator
- Fixed switching frequency: 2.2MHz or 440kHz
- Spread Spectrum Modulation (SSM), pseudo-random frequency and dwell time
 - Enable/disable
 - Frequency modulation $\pm 1%$, $\pm 2%$, $\pm 3%$,
 - Upward/centered/downward modulation
- Boot UVLO

Applications

- Automotive power
- R-CAR processor PMICs
- DC/DC POL modules

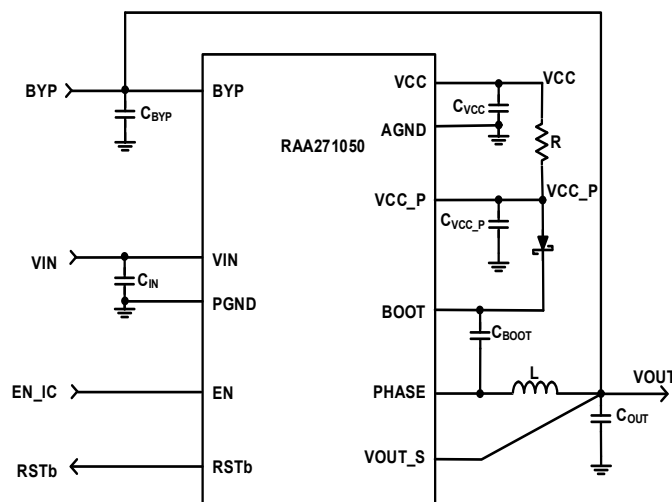


Figure 1. Typical Application Diagram

1. Overview

1.1 Typical Application Schematic - 2.2MHz Switching Frequency

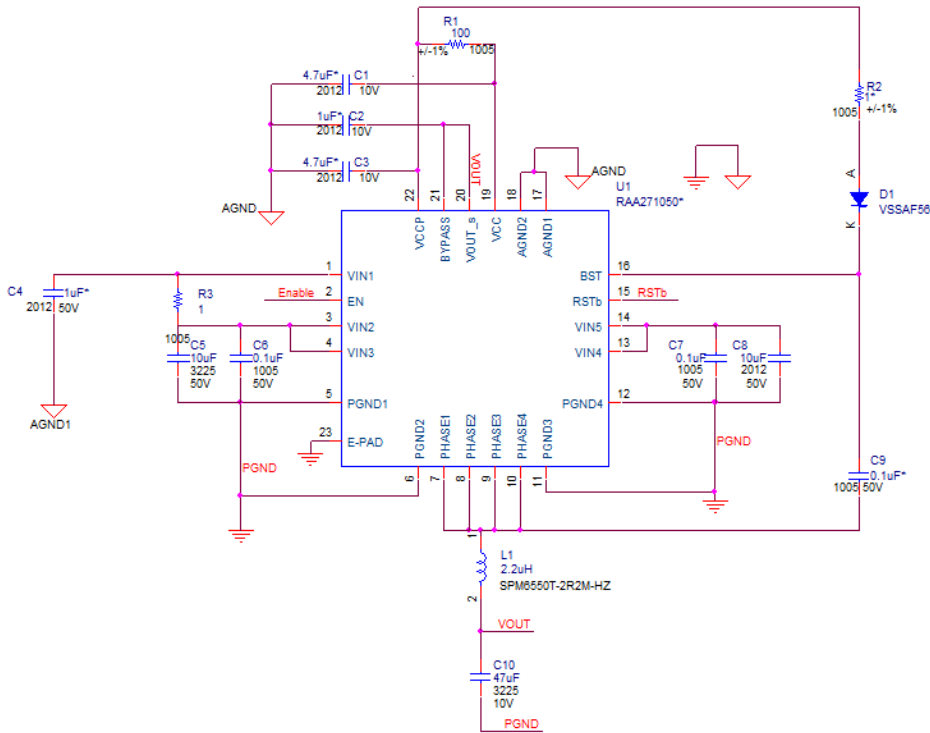


Figure 2. 2.2MHz Switching Frequency Schematic

1.2 Typical Application Schematic - 440kHz Switching Frequency

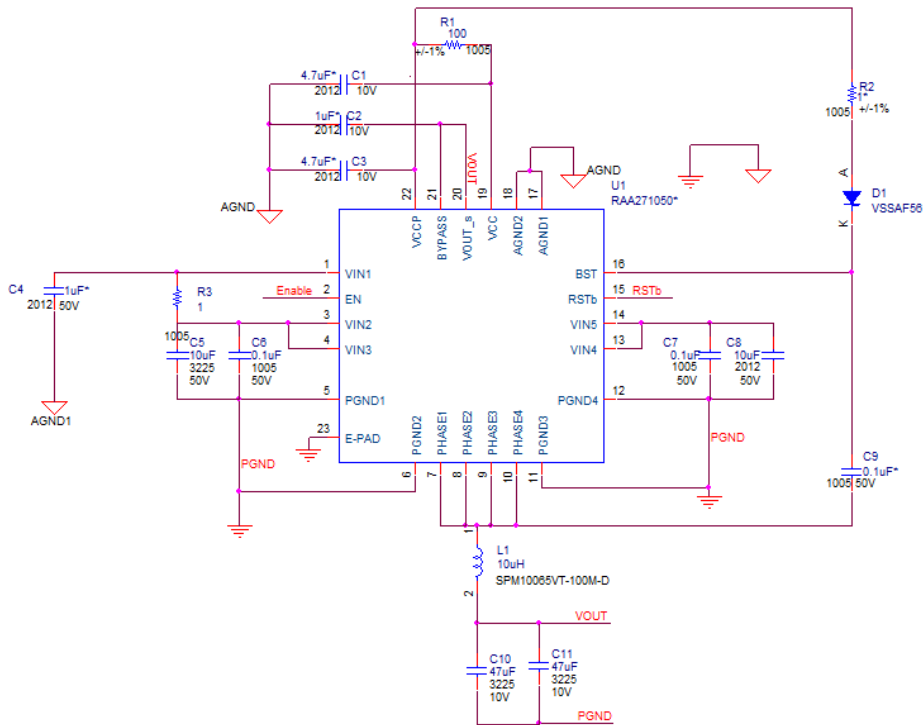


Figure 3. 440kHz Switching Frequency Schematic

1.3 Target Application

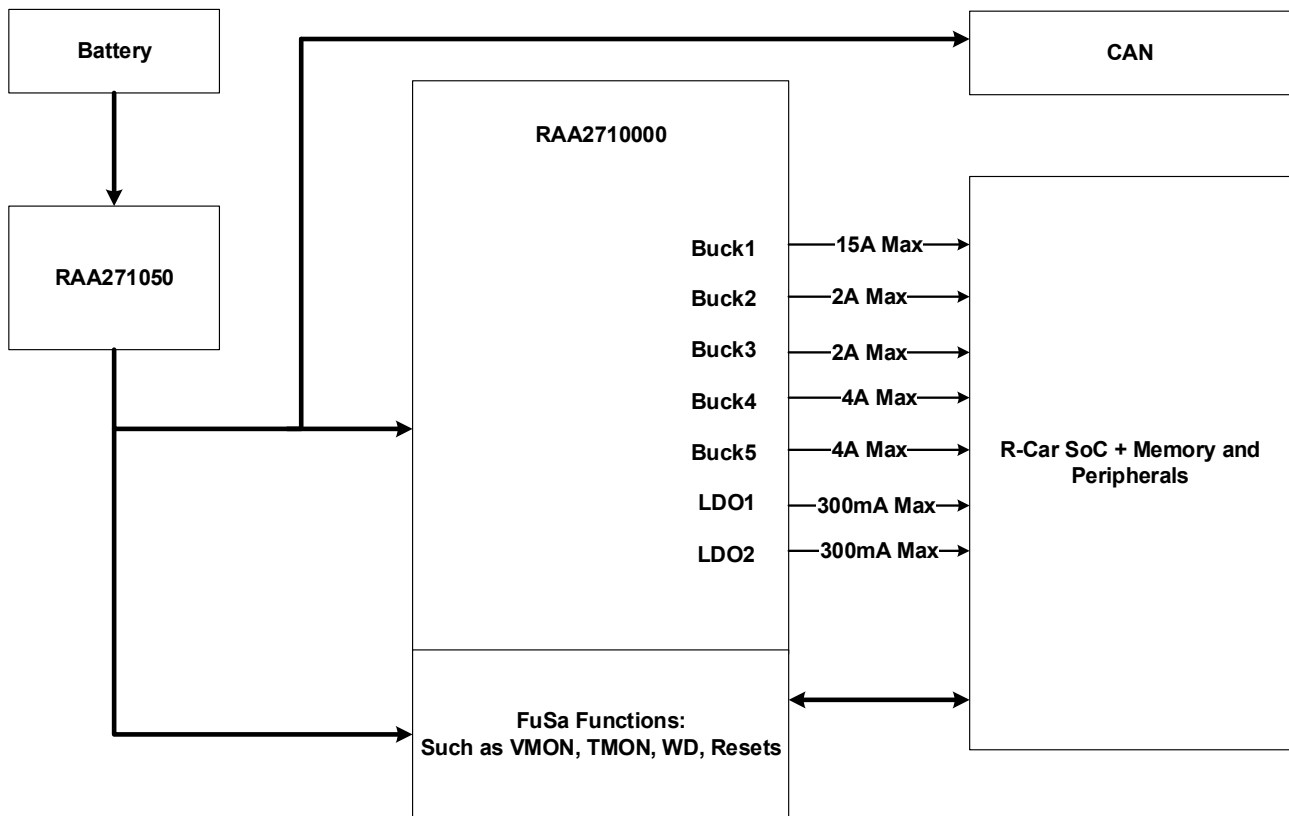


Figure 4. Target Application

1.4 Block Diagram

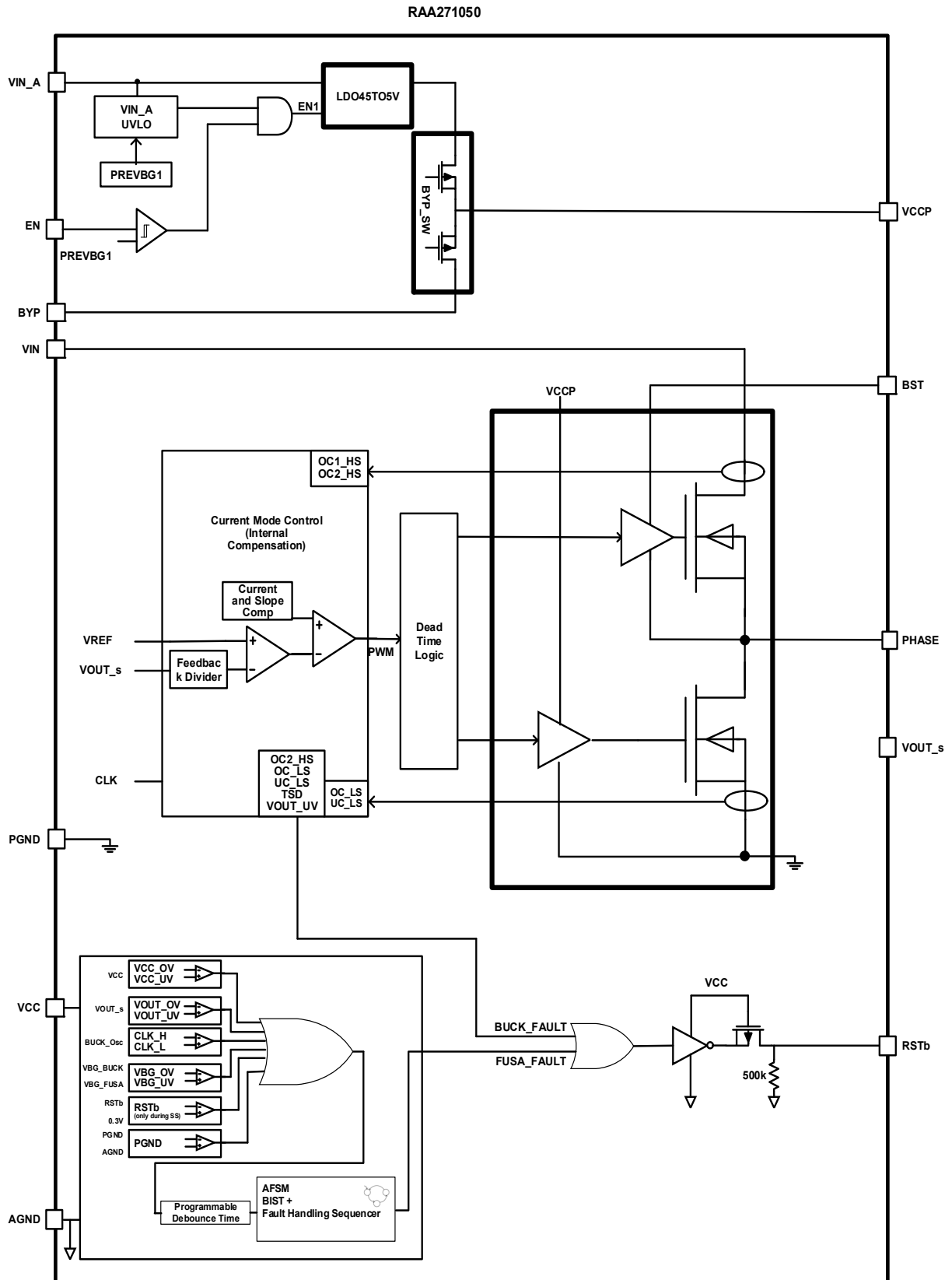
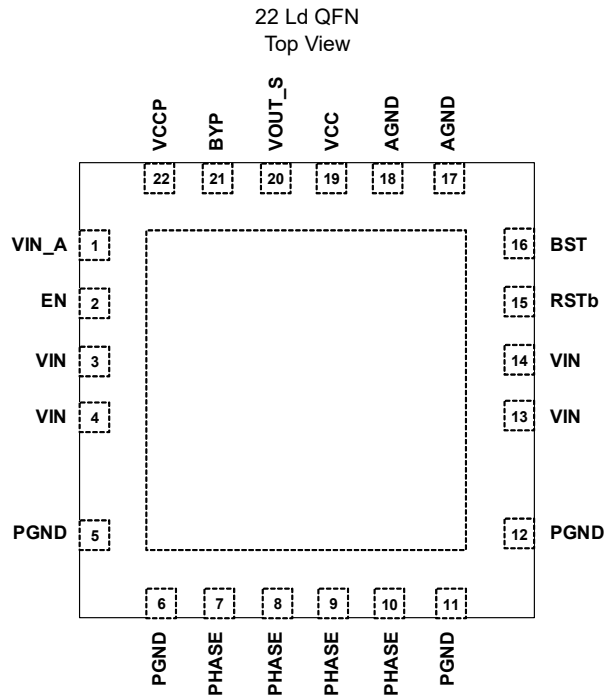


Figure 5. Block Diagram

2. Pin Information

2.1 Pin Configurations



2.2 Pin Descriptions

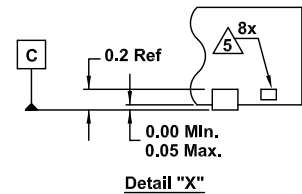
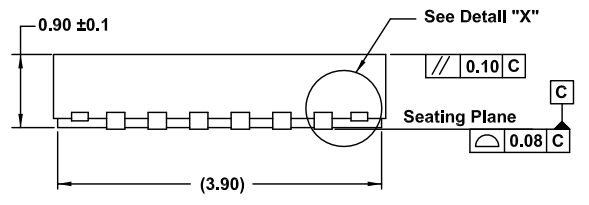
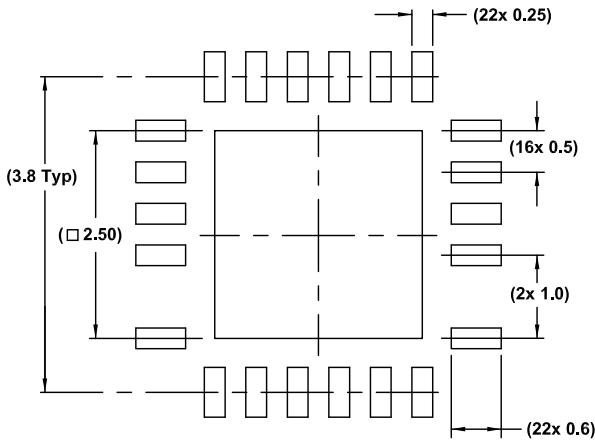
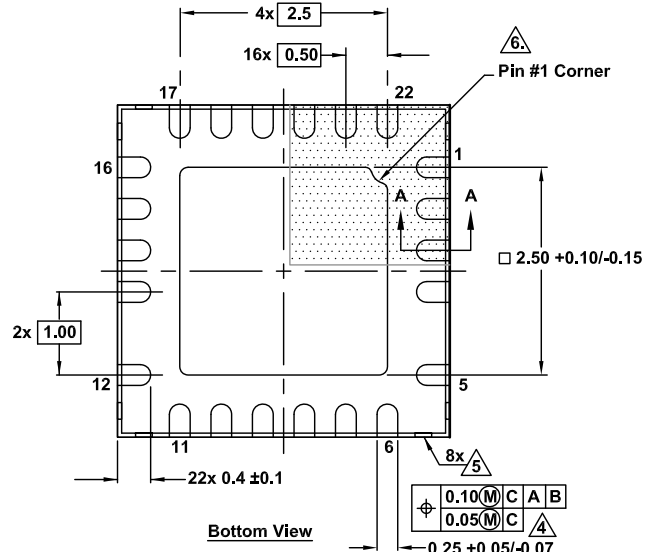
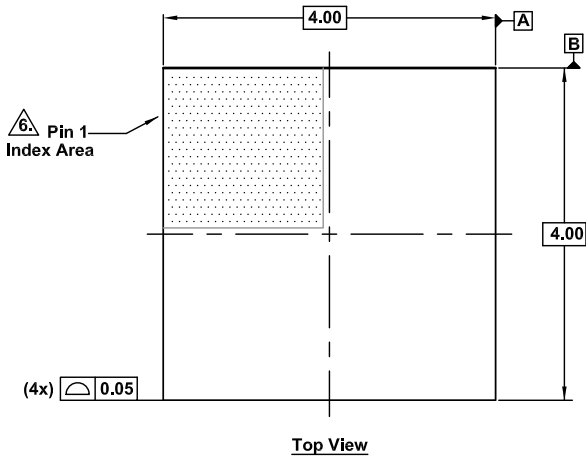
| Pin Number | Pin Name | Description |
|--------------|----------|---|
| 1 | VIN_A | Input supply voltage for the internal LDO (VCCP). Connect through 1 Ohm resistor to VIN pin, and place 1µF capacitor for filtering. |
| 2 | EN | Enable control input. EN is a threshold-sensitive enable input to the chip. When EN > 1.2V (typical), the VCCP LDO is activated and IC circuits are powered-up, and the device goes into standby and no switching occurs. When EN > 1.85V (typical), buck begins switching. When EN falls below 0.45V, the IC is disabled and all fault states are cleared. EN can be tied to VIN for automatic startup. |
| 3, 4, 13, 14 | VIN | Supply input for the IC and Buck switching regulator. VIN supplies the high-side MOSFET of the Buck switching regulator and also supplies the internal VCCP regulator that powers IC circuits. Place a 10µF ceramic capacitor in parallel with a 0.1µF ceramic capacitor from VIN to PGND and as close as possible to the IC for minimum switching loop and smallest spikes due to fast switching. |
| 5, 6, 11, 12 | PGND | Provides the return path for the low-side MOSFET. This pin carries a noisy driving current, so the traces connecting from this pin to the low-side MOSFET source and VCC decoupling capacitor ground pad should be as short as possible. All the sensitive analog signal traces should not share common traces with this driver return path. Connect this pin to the ground copper plane (wiring away from the IC instead of connecting through the IC bottom PAD) through several vias as close as possible to the IC. |
| 7, 8, 9, 10 | PHASE | Switching node of Buck. PHASE is the connection point of the high-side N-channel MOSFET and low-side N-channel MOSFET switches of Buck that drive the Buck inductor. PHASE is a high-dV/dt node that should be isolated from sensitive traces as much as possible. |
| 15 | RSTb | System reset output. The RSTB is an active low/active high output that provides a hard reset-low signal to the system MCU when an output fault occurs. Faults that trigger the RSTB output are listed in "RSTB" on page xx. Note: When the RSTB output is high, it is internally driven to the a diode below the VCC voltage. |

| Pin Number | Pin Name | Description |
|------------|----------|---|
| 16 | BST | Buck high-side MOSFET driver supply. BST provides bias voltage for the Buck high-side MOSFET driver. An internal bootstrap circuit creates a voltage between BST and PHASE suitable to drive the Buck internal high-side N-channel MOSFET. Renesas recommends placing a 0.1µF ceramic capacitor between the BST and PHASE pins. The internal bootstrap circuit recharges the boot capacitor when the Buck low-side switch is on. BST is a high-dV/dt node that should be isolated from sensitive traces as much as possible. Provides bias voltage to the high-side MOSFET driver. The VCCP (internal LDO) provides the bias to BST through a fast switching diode. |
| 17 | AGND | Analog ground connection for internal VCCP regulator |
| 18 | AGND | Analog ground connection for VCC Monitor bias supply |
| 19 | VCC | Monitor bias supply. The VCC operating range is 3.3V to 5.5V. A 100Ω resistor between VCCP and VCC along with a minimum 10µF decoupling ceramic capacitor should be used between VCC and PGND |
| 20 | VOUT_s | Buck output voltage feedback input. Connect VOUT_s to the output of Buck to provide the feedback sense voltage for the Buck regulator. An internal resistor divider at FB sets the output voltage. The Buck output voltage is factory-programmable to either be 3.3V or 5V. Route the VOUT_s trace away from noisy or high-dV/dt signals. This pin is discharged by a 100Ω pull-down resistor when the device is disabled |
| 21 | BYP | Bypass/output node of the internal linear regulator that supplies the bias voltage for the IC, including Buck drivers, BST capacitor, and most of the internal circuits. The BYP operating range is typically 3V to 5.5V, nominally 4.3V. Use a minimum 1µF decoupling ceramic capacitor between this pin to ground plane close to PGND1. If BYP is not used, connect to GND. |
| 22 | VCCP | Output of the internal linear regulator that provides bias for the low-side driver, high-side driver (VCCP to connected to BST through a diode). |
| E-pad | | E-pad must be soldered to a large ground plane on the PCB that does not contain noisy power flow. Use as many vias as possible in PAD to help reduce the θ_{JA} of the IC package. E-pad does not have an electrical connection. |

3. Package Outline Drawing

L22.4x4
 22 Lead Step Cut Quad Flat No-Lead Plastic Package (SCQFN)
 Rev 0, 1/19

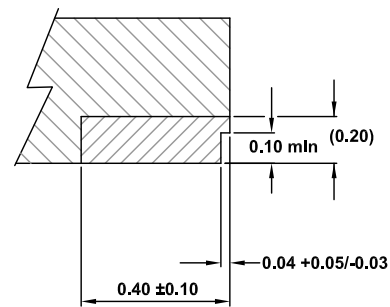
For the most recent package outline drawing, see [L22.4x4](#).



Typical Recommended Land Pattern

Notes:

- Dimensions are in millimeters. Dimensions in () for reference only.
- Dimensioning and tolerancing conform to ASME Y14.5m-1994.
- Unless otherwise specified, tolerance: Decimal ±0.05
- $\triangle 4$ This dimension applies to the metallized terminal and is measured between 0.15mm and 0.30mm from the terminal tip.
- $\triangle 5$ Tiebar shown (if present) is a non-functional feature.
- $\triangle 6$ The configuration of the pin #1 identifier is optional, but must be located within the zone indicated. The pin #1 identifier may be either a mold or mark feature.



4. Revision History

| Rev. | Date | Description |
|------|--------------|-----------------|
| 1.0 | Mar 26, 2021 | Initial release |

IMPORTANT NOTICE AND DISCLAIMER

RENESAS ELECTRONICS CORPORATION AND ITS SUBSIDIARIES (“RENESAS”) PROVIDES TECHNICAL SPECIFICATIONS AND RELIABILITY DATA (INCLUDING DATASHEETS), DESIGN RESOURCES (INCLUDING REFERENCE DESIGNS), APPLICATION OR OTHER DESIGN ADVICE, WEB TOOLS, SAFETY INFORMATION, AND OTHER RESOURCES “AS IS” AND WITH ALL FAULTS, AND DISCLAIMS ALL WARRANTIES, EXPRESS OR IMPLIED, INCLUDING, WITHOUT LIMITATION, ANY IMPLIED WARRANTIES OF MERCHANTABILITY, FITNESS FOR A PARTICULAR PURPOSE, OR NON-INFRINGEMENT OF THIRD PARTY INTELLECTUAL PROPERTY RIGHTS.

These resources are intended for developers skilled in the art designing with Renesas products. You are solely responsible for (1) selecting the appropriate products for your application, (2) designing, validating, and testing your application, and (3) ensuring your application meets applicable standards, and any other safety, security, or other requirements. These resources are subject to change without notice. Renesas grants you permission to use these resources only for development of an application that uses Renesas products. Other reproduction or use of these resources is strictly prohibited. No license is granted to any other Renesas intellectual property or to any third party intellectual property. Renesas disclaims responsibility for, and you will fully indemnify Renesas and its representatives against, any claims, damages, costs, losses, or liabilities arising out of your use of these resources. Renesas' products are provided only subject to Renesas' Terms and Conditions of Sale or other applicable terms agreed to in writing. No use of any Renesas resources expands or otherwise alters any applicable warranties or warranty disclaimers for these products.

(Rev.1.0 Mar 2020)

Corporate Headquarters

TOYOSU FORESIA, 3-2-24 Toyosu,
Koto-ku, Tokyo 135-0061, Japan
www.renesas.com

Contact Information

For further information on a product, technology, the most up-to-date version of a document, or your nearest sales office, please visit:
www.renesas.com/contact/

Trademarks

Renesas and the Renesas logo are trademarks of Renesas Electronics Corporation. All trademarks and registered trademarks are the property of their respective owners.